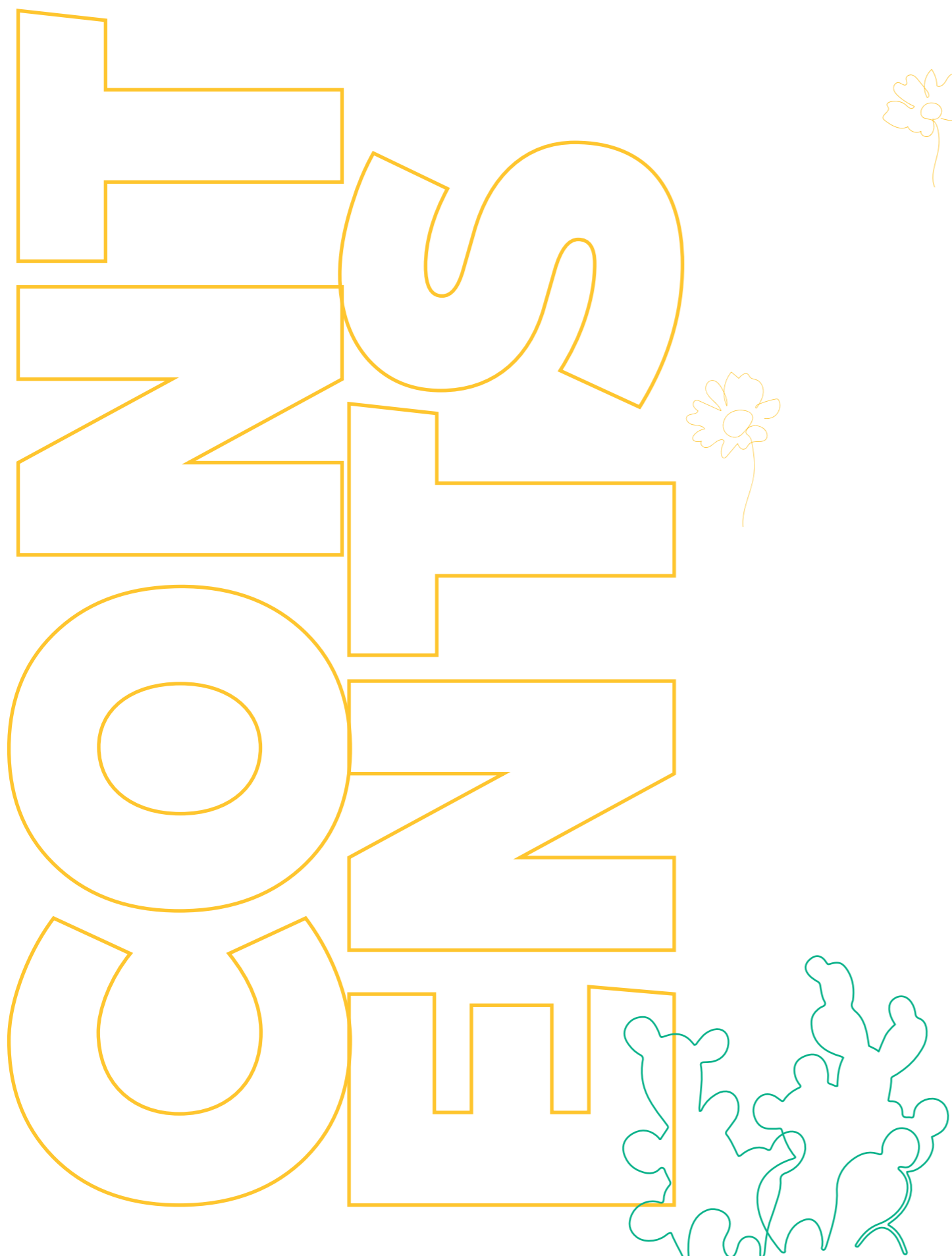


SANCAKLI



BIR 01

SOUL 07

SAN 12

ILK 02

SMILE 08

NORD 13

MOD 03

ARCHIE 09

FRAME 14

GÜN 04

SARCHIE 10

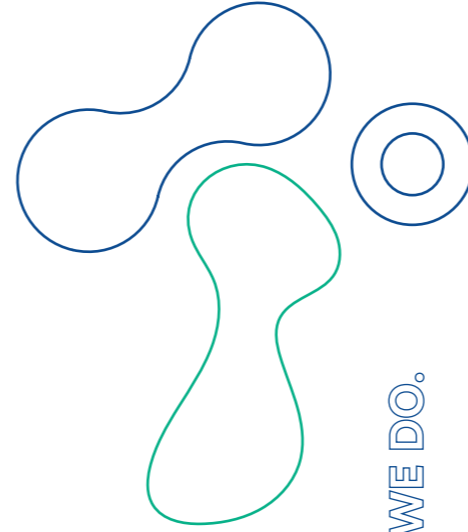
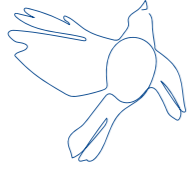
HANA 15

LIN 05

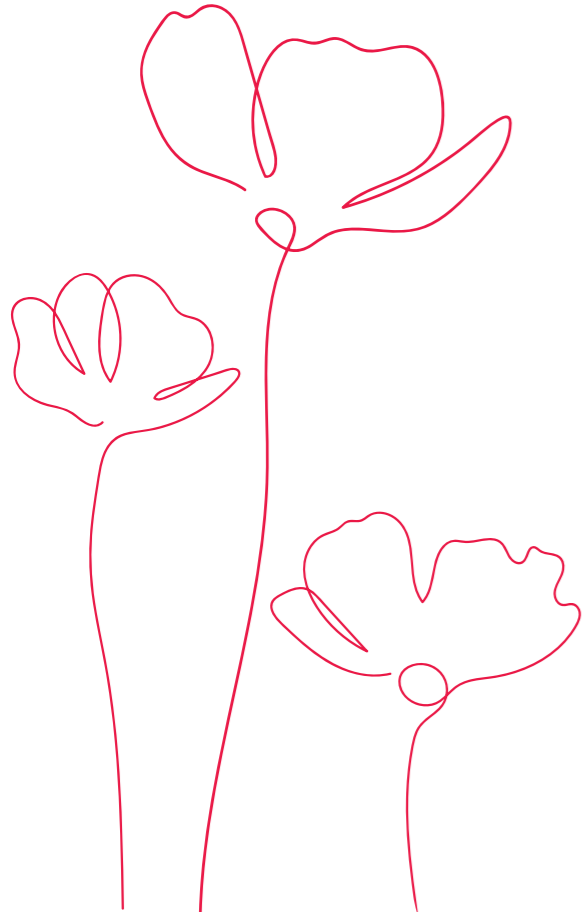
TARCHIE 11

ROM 06





SANCAKLI



LET THE BEAUTY WE LOVE, BE WHAT WE DO.

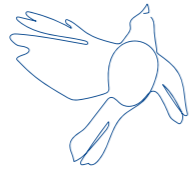
One word connects 7 continents and billions of people. Knows one language; but can speak with anyone. Has no boundaries nor borders. All things to all people yet only some could find. Easy to say, hard to surrender. Stronger than diamond, fragile as crystal. Makes you eat your words and still starve for some more. Comes in different forms and ways but always with the same intention. Elder as the mankind, youthful as a teenager. Always been there, always will be.
Love.

The reason we have started, the purpose we are aiming. In our first chair, now in this latest collection. We wanted to share our love for our profession. Let the beauty we love, be what we do.

We believe we are young enough to feel confident about our appearance and what others think about it; set our own rules, play with colors and shapes as we want; enjoy ourselves and live for the moment. We love who we are, what we have achieved so far. We savored every moment of our recreation. The only thing what matters from now on is to share love through our newest creation.

We will keep doing what we do the best, creating and sharing.

We share love.



SARPER SANCAKLI

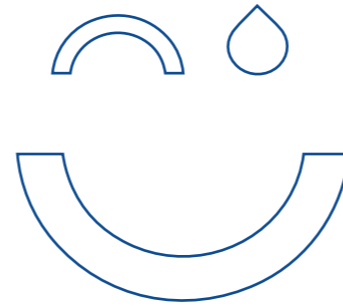
BRAND MANAGER
& CO. PARTNER

As a member of the family, it is my pleasure to introduce Sancaklı Design, where nature, design, and sustainability come together to create beautiful, enduring furniture for modern living. We aim to be clean, pure and authentic to design pieces full of character.

Trends are changing; and it gives us courage and desire to experiment, refine and seek for ideal solution to create timeless design that will connect with people and will last for generations. Inspired by the natural world and the beauty of everyday living, our pieces combine innovative design with sustainable materials and practices. We use the highest quality materials, sourced from responsible suppliers who share our commitment to environmental stewardship. We intend to create pieces that are an investment in your well-being and the future of our planet.

We look for authenticity and identity in our living space. We believe that your home should be a sanctuary, a space that reflects your values and inspires you every day. That's why we design and craft furniture that is not only stylish and functional, but also sustainable and built to last. Our collections are designed to seamlessly blend into your existing décor, creating a clean, minimalist aesthetic that is both timeless and modern. We believe that less is more, and that quality craftsmanship and enduring design are the keys to creating a truly sustainable home.

We want to create memories together and invite you to explore our collection and discover the perfect pieces to elevate your home and your life. Join us on our journey to create a more sustainable future, one beautifully crafted piece at a time.



bir

Bir armchair features beautiful gentle curves from the arms through the back. This wavy comfort eases the difficulties of contemporary life by its heritage. Bir stands confident owing to its wise background. It is an expression of timeless attitude. The beauty of the chair design lies both in structure and the aesthetic quality of the laminated wood veneers material, with the sleek surfaces enhancing curvy shape. Various color and natural wood design options are available for your choice.

DESIGNER / ADNAN SERBEST



bir

01



bir





ilk

An armchair which evokes the comforting echoes of the past, offering a modern interpretation of the inciting look. This glitzy piece, evolves from the reassuring solidity of the first gentry, focusing on the coquettish persona. Combination of the laminated wood veneer, metal cores and upholstered foam makes the chair a perfect formula which adapts to every functional and aesthetic need and fit any habitat.

DESIGNER / ADNAN SERBEST



ilk

02



ilk



ilk

C O S Y Y E T E L E G A N T



mod

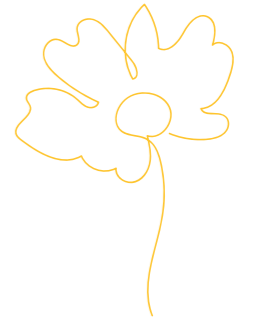
Made from laminated veneer and bended metal combined with the upholstery. Universal shape and a combination that adds to the cosy yet elegant effect which fits into every corner and style of decor.

DESIGNER / ADNAN SERBEST

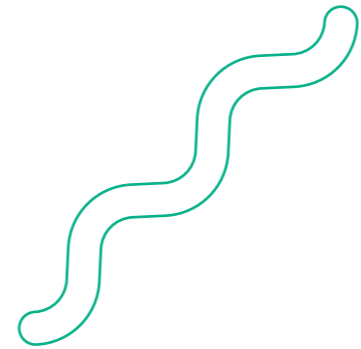


mod

03



mod



gün

Product accentuates the quest for simplicity. Gün's friendly, fresh and playful soul, wipes out the ego, tries to convey the concept of a chair that speaks the universal language. This summery design has parallel cut wood veneer monoblock body with colorful powder coated metal legs. You can play with the legs and monoblock body to open the doors of your inner child.

DESIGNER / ADNAN SERBEST





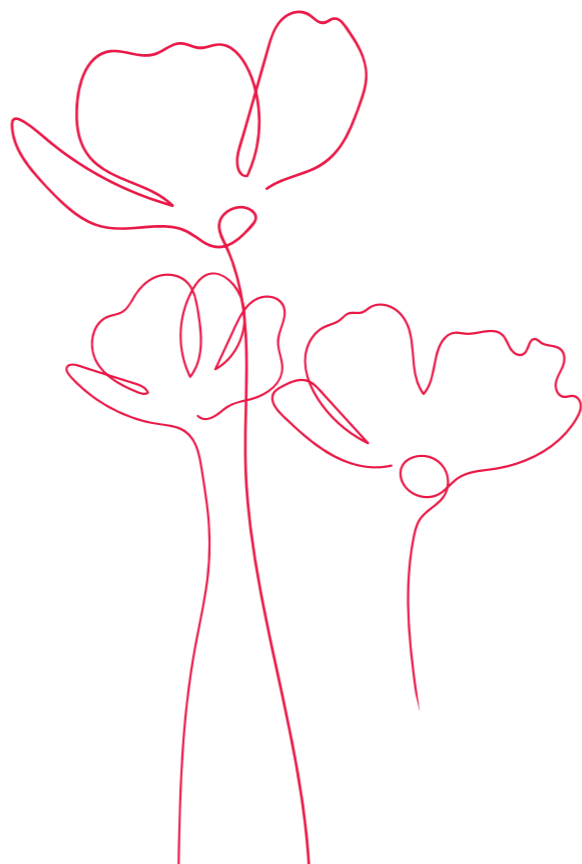
gün

gün





lin



lin

The chair design is an attempt to give the floating vision in order to create a brave and dreamy character that would define an intellectual woman. It winks and seduces, never denying its strong personality. The silhouette of the chair is linear, elegant and visibly sexy. It is the simplicity of the geometric frame that gives the armchair its elegant character. Minimalist proportions meet with clean cut wooden cylinders to sharp angled plywood panels to ensure sophistication. You can choose various colors bravely or stay traditional with natural wood look.

DESIGNER / ADNAN SERBEST



05



ไม้



rom

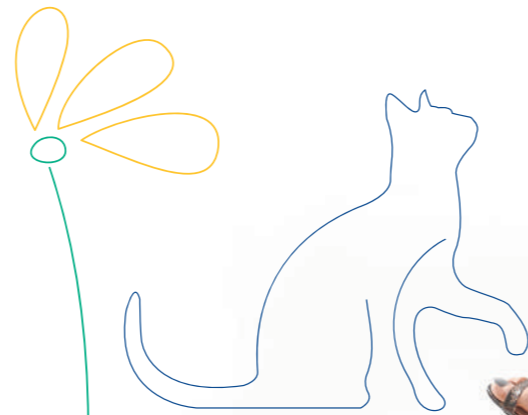
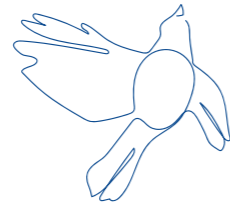
rom

Rom is a neat representation of the harmonious cultures of the Roman era referring to the relationship between people and architecture. Curved Laminated veneer and roman column like solid wood legs, resulted in the modern interpretation of classic shapes of the past. Rom tries to stay somewhere between piece of furniture and architectural structure.

DESIGNER / ADNAN SERBEST



06



rom

R E A S S U R I N G , C A L M A N D S I L E N T .



soul

Reassuring, calm and silent. Embracing whoever sits down, providing maximum comfort and intimacy. Feminine look of laminated wood veneer legs, upholstered interior of the shell and leaning back along with the fine proportions and minimal construction gives design a welcoming, matronly and restful character. It will grow old gracefully and lean into people's lives for years of pleasure.

DESIGNER / ADNAN SERBEST



soul

07



soul





smile

Smile chair allows you to not only enjoy the appearance and warmth of the wood, but also comfort and durability of plywood. Promising personality of young design should be pleasing to the eye and be able to fit various spaces from restaurants to rooms. The smile chair gives the energy of happiness and it is durable to last generations, but also supremely handsome in appearance.

DESIGNER / ADNAN SERBEST

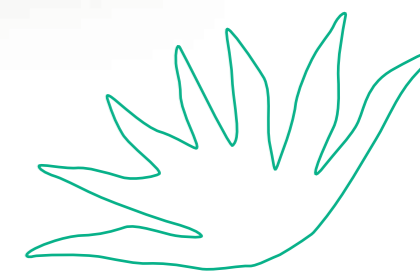


smile

08



smile





archie

Archie, from the monoblock series where its vibrant colors will cheer your living and working spaces and neutral tones will instill calmness. It comes with arrow and wide mold options, allowing various purposes to be met. Standing up with laminated veneer legs, this chair will be an indispensable piece for various spaces.

DESIGNER / ADNAN SERBEST



archie

09



archie



sarchie

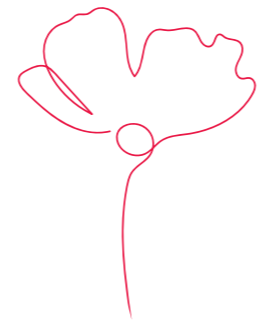
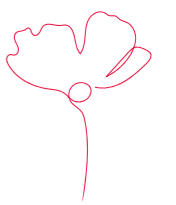
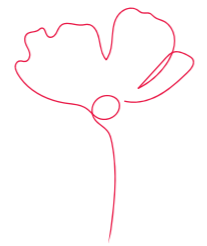
Sarchie, a cherished member of our monoblock series, introduces lively sophistication with a twist to your spaces. Its vivacious colors add brightness, while neutral tones bring a sense of tranquility. Sarchie is designed for versatility. Standing gracefully on spiral legs, this chair is an essential element for creating timeless settings.

DESIGNER / ADNAN SERBEST



sarchie

10



sarchie



tarchie

Meet Tarchie, the epitome functionality in our esteemed monoblock series. Tarchie stands out with its vibrant colors, versatile options, and a distinctive touch of modernity – all anchored by its metal legs equipped with wheels. Tarchie is ready to be the focal point of your design, effortlessly gliding across your room, study, or work area.

DESIGNER / ADNAN SERBEST



tarchie

11



tarchie



san

San embodies elegance, practicality, and timeless design. Imagine a piece that whispers of contemporary sophistication, seamlessly adapting to any space while folding neatly for effortless storage. That's San, a chair that infuses your life with style and inspires possibilities with every touch. San's foundation lies in the beauty of wood. Its natural grain and warmth exude a timeless elegance, elevating any room it graces. The quality craftsmanship shines through, ensuring San holds its own as a statement piece while blending effortlessly into modern or classic settings. Fold open a world of inspiration and welcome San into your life.

DESIGNER / ADNAN SERBEST

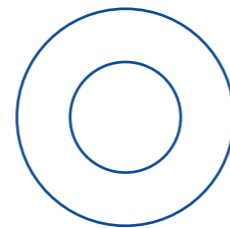


san

12



san



nord

A simple and refined design that transforms wooden veneers into a statue. The Nord wooden stool combines timeless style with authentic and natural beauty. Nord's fluid form evokes the image of a fountain's graceful arc, its curved legs ascending in a dance of light and shadow. Contemporary and yet classic, it is suitable for any interior. This height-adjustable stool, adaptable to your needs with a simple rotation, becomes a treasured object in any setting

DESIGNER / ADNAN SERBEST



nord

13



nord





frame

Chairs with a Conscience: Nature Framed in Minimalist Lines
Sustainably Crafted, Joyfully Lived

An armchair that defines what sustainable simplicity looks like. Its name whispers the essence of its design: wooden frames crafted from recycled materials, inviting you to see the world through a lens of conscious living. No unnecessary embellishments, just the pure form of wood, embracing the natural grain and texture.

Whether you're looking to create a cozy reading nook or a stylish lounge area, Frame adapts to your needs. Its versatility lies not only in its design but in the thoughtful consideration of every component, making it an ideal addition to your living space. Bring a touch of nature into your life through the Frame, where comfort and conscience coexist seamlessly. Featuring clean lines and a minimalist aesthetic, Frame exudes an understated elegance that effortlessly fits into any contemporary space. Its simplicity is its strength, creating an inviting atmosphere without overwhelming the room.

The wooden frames, recycled foams, and eco-friendly textiles symbolize a conscious effort to look through the frame of sustainability, echoing our commitment to a greener, more harmonious world. It's a piece that speaks to your values, your commitment to the planet, and your appreciation for timeless design. With every touch, you'll feel the warmth of nature, the satisfaction of conscious living, and the pride of owning a piece that reflects your values.

It's a functional design that respects your time and space. As a minimal and knocked-down product, it arrives in a small box, making transportation and assembly a breeze. The demounted structure ensures that you can enjoy your armchair without the hassle of large and cumbersome packages. Arriving in a compact box, it awaits your assembly, like a blank canvas ready for your personal touch. The process is effortless, a testament to thoughtful design and a celebration of self-reliance

frame

14



frame



hana

A Blossoming Dance of Minimalist Beauty

Hana transcends mere furniture to become a sculptural expression of nature's elegance in your home. Each curve of Hana's form unfolds with intention, revealing the inherent beauty of simplicity. A natural veneer is crafted from sustainably sourced wood, whispers of whispering leaves, and sun-dappled forests. Every line and angle invites you to experience the quiet poetry of design without excess. An invitation to slow down, appreciate the quiet beauty of nature and experience the transformative power of minimalist design.

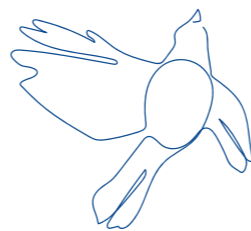
Welcome Hana into your home, and let her blossom into a sanctuary for your senses and a symbol of your connection to the natural world. Own a piece of nature's art. Own Hana.

DESIGNER / ADNAN SERBEST



hana

15



hana



The mark of
responsible forestry



PEFC/54-31-00037

www.pefc.org